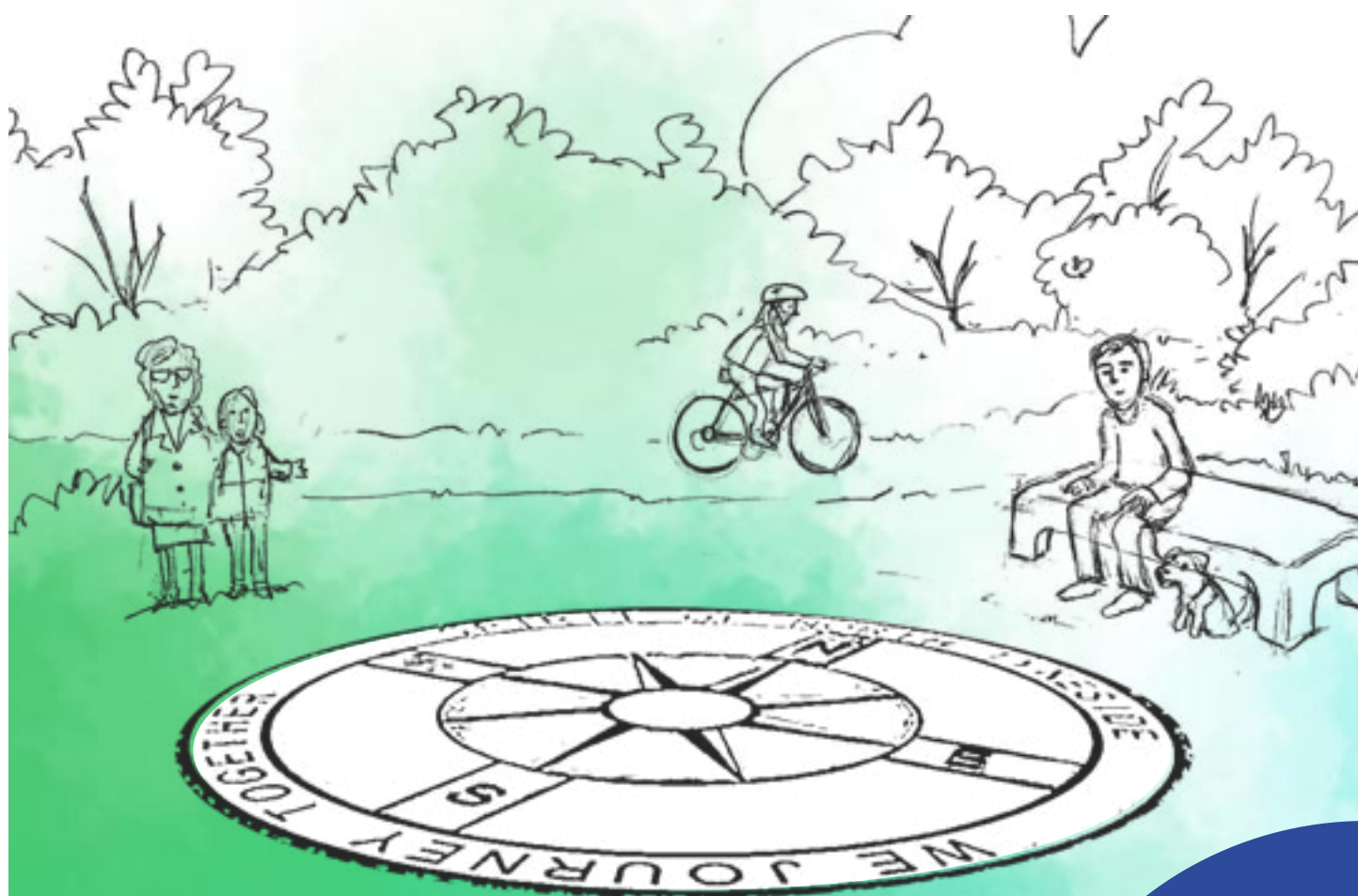


Commemoration and Celebration

A Physical Memorial



www.northtyneside.gov.uk

   NTCouncilTeam



North Tyneside Council

Commemoration and Celebration

A Physical Memorial

We are seeking your views on how North Tyneside remembers and reflects on the impact of the pandemic. These proposals offer opportunities for everyone to commemorate loss but also recognise how lives changed and the impact this had on us all.

Our plans include creating lasting physical memorial areas for contemplation and reflection in each of the four parts of the borough, in areas linked to the wagonways. The arterial wagonway routes across the borough link to Silverlink Biodiversity Park, near the sundial, and so a central memorial area for contemplation is planned there, too.

The wagonways were chosen because they were so well used during lockdown to help maintain residents' health and wellbeing, and we would like to continue to encourage people to use them for healthy activities whilst providing resting places for quiet contemplation.

Our proposal is to base the physical memorial areas around the theme of a compass detailed in decorative hard-landscaped paving with natural planting and seating as places to rest and reflect. The word compass combines two Latin words – 'com' which means together and 'passus' which means pace or step. Together they can mean 'journey together' which is something that we've done in North Tyneside throughout the pandemic.



SOUTH EAST COMMUNITY



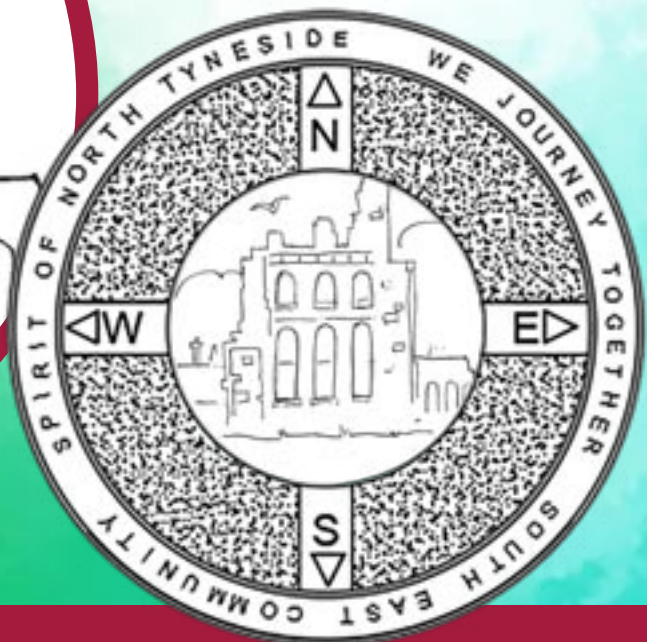
OPTION
1



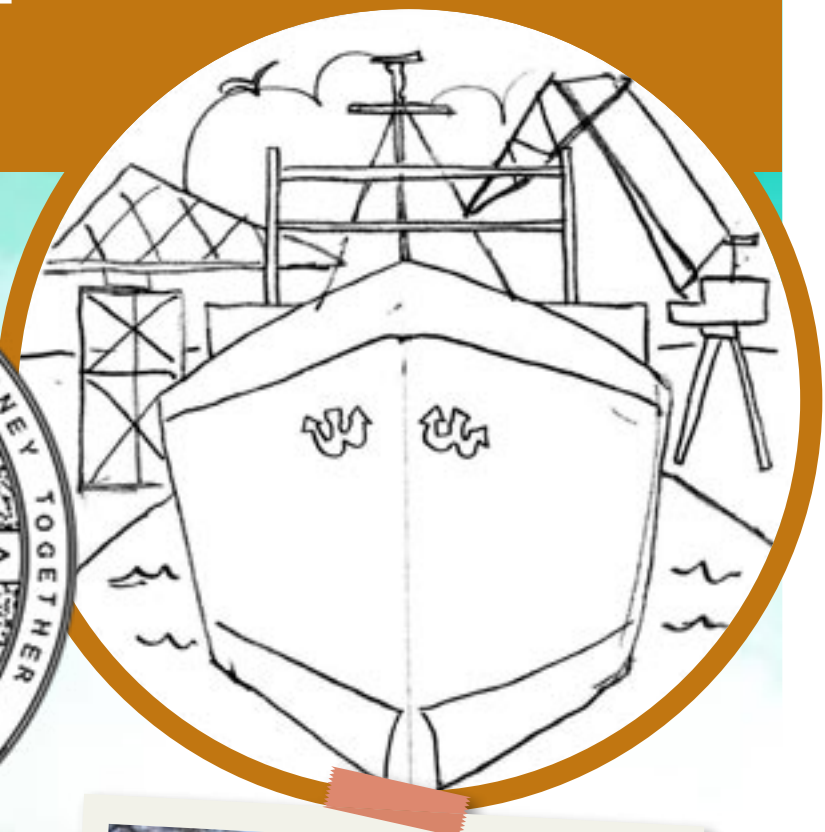
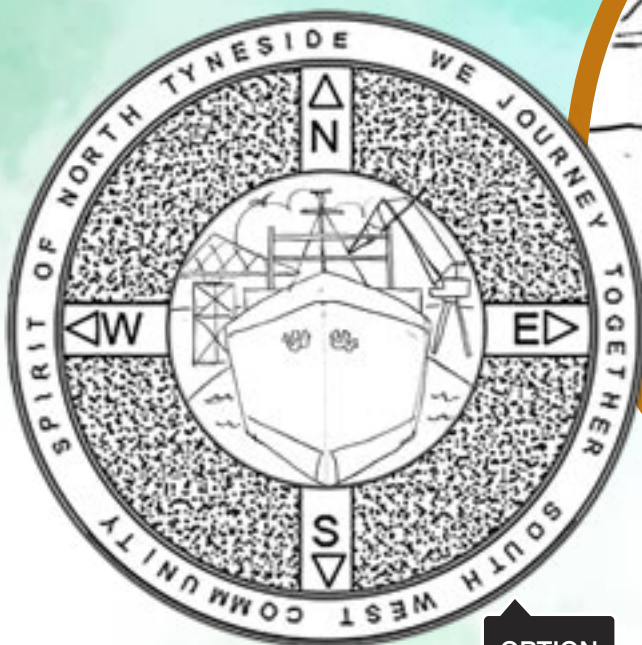
Redburn Dene Park



OPTION
2



SOUTH WEST COMMUNITY



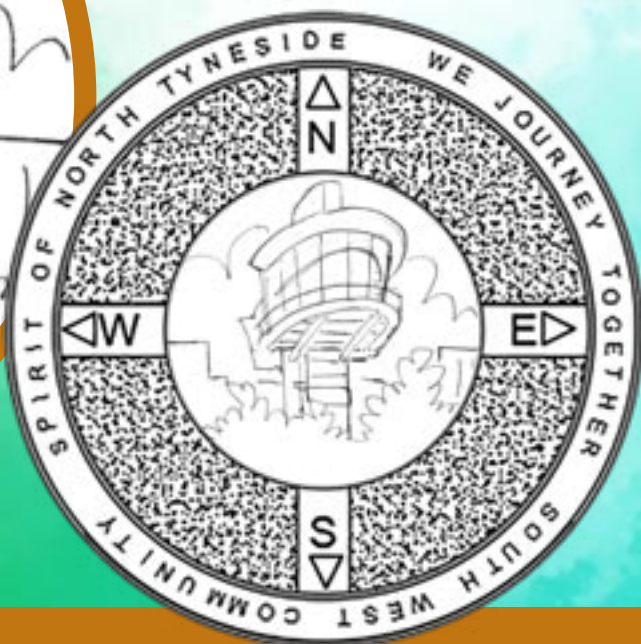
OPTION
1



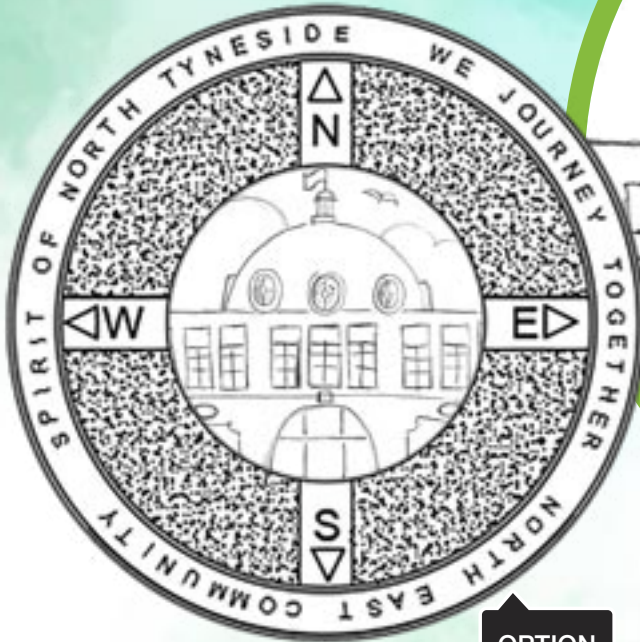
Wallsend Hall grounds



OPTION
2



NORTH EAST COMMUNITY



OPTION
1



Churchill Playing Fields



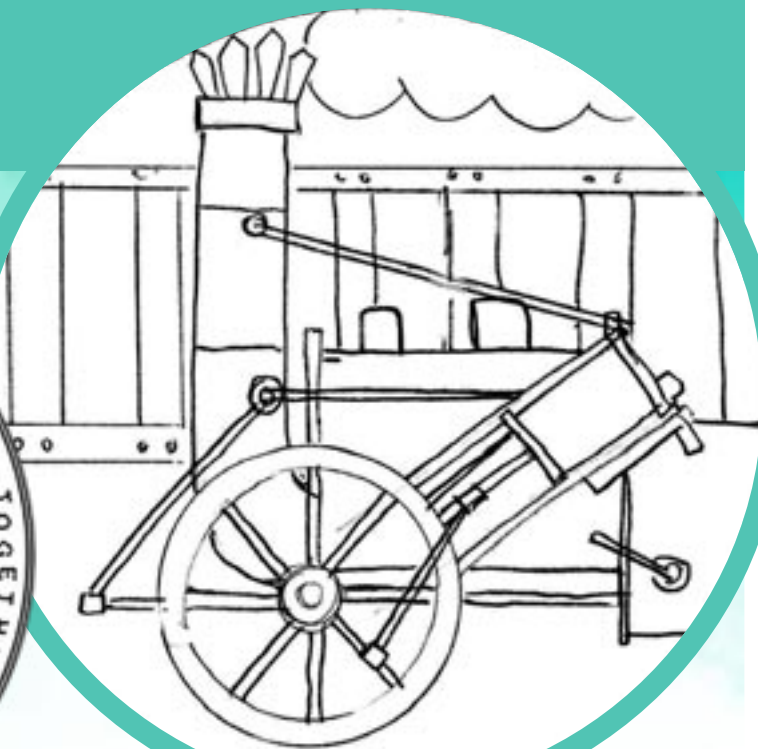
OPTION
2



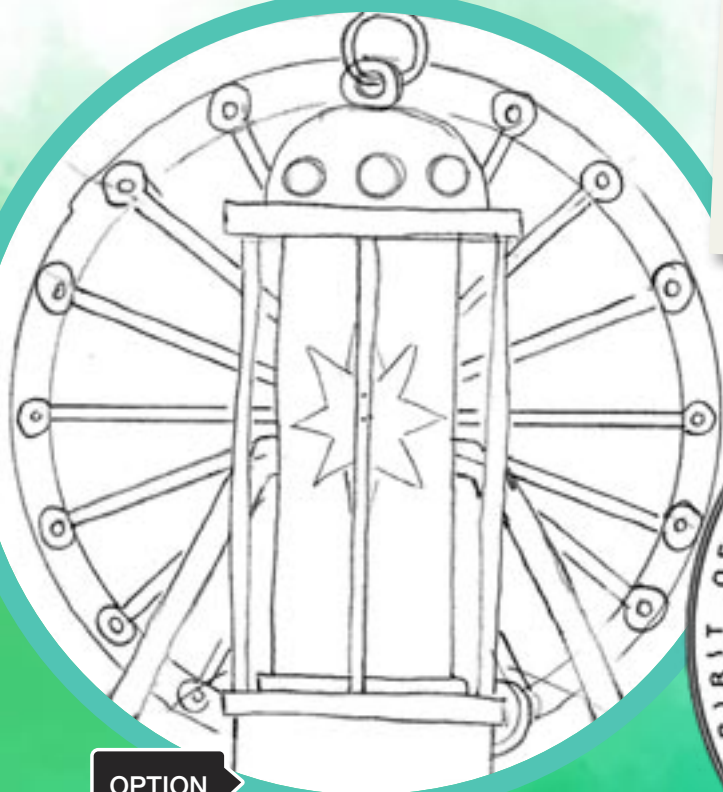
NORTH WEST COMMUNITY



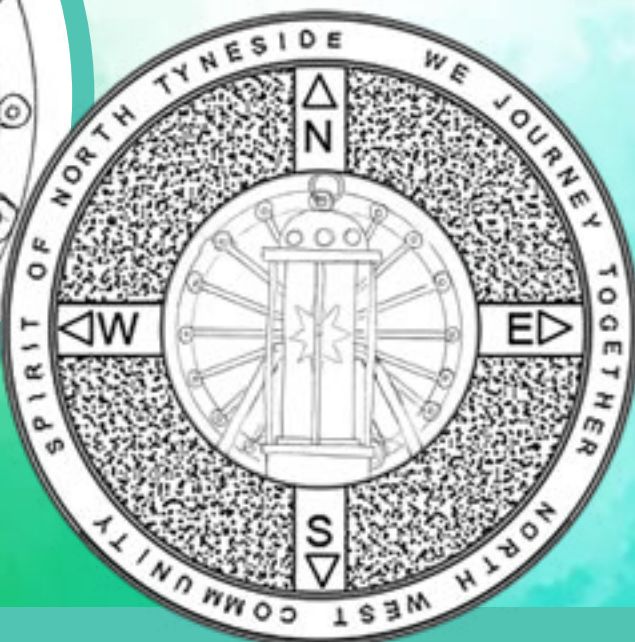
OPTION
1



Killingworth Lakeside Park



OPTION
2



Have Your Say

We would welcome your views on the design of the middle of the compass in the four areas of the borough, as well as the Silverlink Biodiversity Park.

The locations include:


- Silverlink Biodiversity Park
- Killingworth Lakeside Park in the North West
- Churchill Playing Fields in the North East
- Wallsend Hall grounds in the South West
- Redburn Dene Park in the South East

We plan to feature artwork in the centre of the compass with a theme that has connection to each particular area.

Please share your views on the artwork options by speaking to a member of our team today or by completing the survey at my.northtyneside.gov.uk and searching 'have your say'.

If you would like to comment on the proposals please email: SpiritofNorthTyneside@northtyneside.gov.uk



 SCAN ME

