

Primary Care Networks North Tyneside

Dr Richard Scott
Clinical Chair North Tyneside CCG

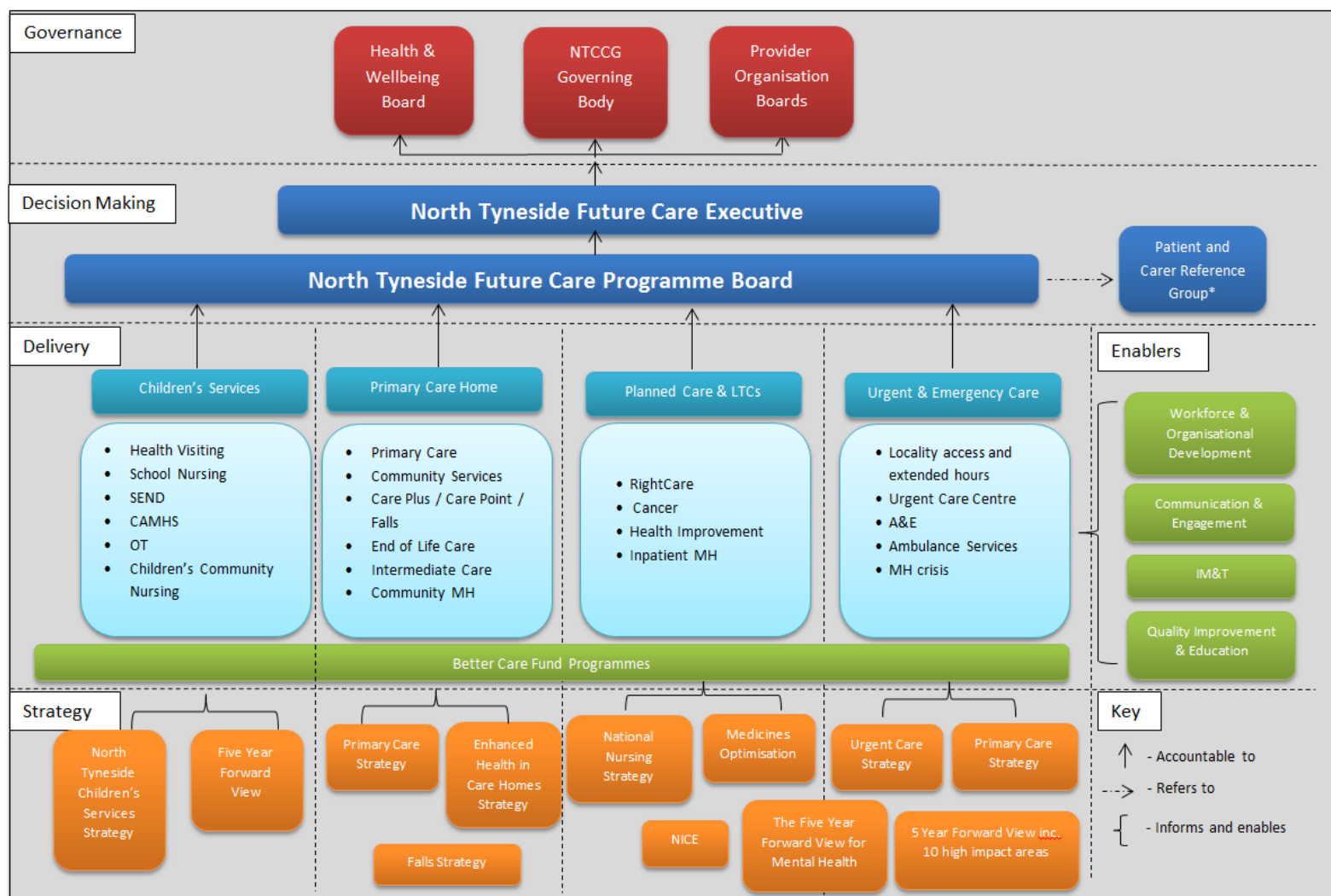


Primary Care Networks

- NorthTyneside place based: Future Care
- Locality journey so far
- Primary Care Networks in North Tyneside
- How they fit with our vision of Primary Care Home
- How all this will benefit patients



North Tyneside place based working



North Tyneside

Place Based: *Future Care*

- Providers working together (*Northumbria, NTW, Newcastle, primary care, community services, third sector, local authority*)
- Strengthening primary/ community services
- Hospital by Exception



- NT place based: Future Care
- **Locality journey so far**
- Primary Care Networks in North Tyneside
- How they fit with our vision of Primary Care Home
- How all this will benefit patients



North Tyneside

27 GP Practices

4 Established GP Localities



North Tyneside
Commissioning Group

North West

- 24% of population
- 64% access NUTH
- Less deprived (IMD 20.1)
- Higher life expectancy

Wallsend

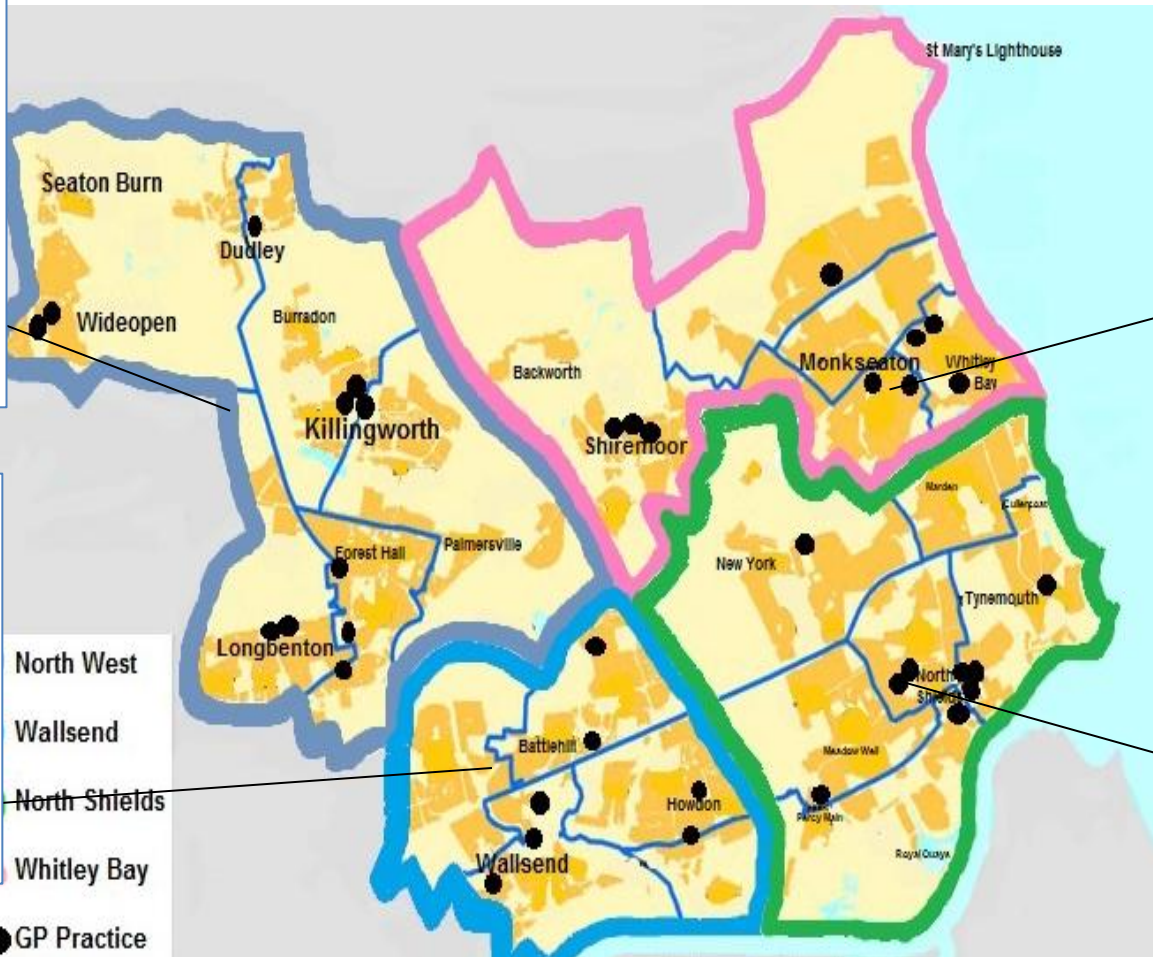
- 22% of population
- 63% access NHCFT
- More deprived (IMD 27.4)
- Lower life expectancy

Whitley Bay

- 28% of population
- 78% access NHCFT
- Least deprived (IMD 14.4)
- Highest life expectancy

North Shields

- 26% of population
- 75% access NHCFT
- Most deprived (IMD 28.4)
- Lowest life expectancy



On 7 January 2019, the NHS long-term plan was published setting out key ambitions for the service over the next 10 years.



“The plan confirms a **£4.5 billion uplift to primary medical and community health services**, trying to make good on the oft-repeated objective to improve out-of-hospital care. In addition, all of England will be covered by integrated care systems (ICSs) by April 2021 and **key responsibilities placed on primary care networks (PCNs)** (these are formed of GP practices typically covering 30-50,000 patients, signing an additional contract as an extension to their current contracts). ”

Extract from The NHS Long Term Plan 2019



What are Primary Care Networks? (PCNs)

- Groups of Practices commissioned to provide primary care services at scale
- 30-50,000 patients
- Delivered and Funded via a Contract (DES)
(Between the CCG and the Network)



Network Contract DES

- Offered to all practices as an extension of their core GP contract and goes live on 1st July 2019
- ***Network Agreement-*** governance, financial structure, roles and responsibilities of each practice.
- ***DES Specification-***outline the full requirements of the DEs.



What will Primary Care Networks do?

2019/20 there are 3 areas for the DES:

1. Access

July 2019 – Extended Hours Access

2. Clinical Pharmacy

Additional WTE in each network to work across practices

3. Social prescribing

Building on experience of previous schemes



Primary Care Network Workforce

- Clinical Director
- Administration support staff
- Additional Roles
 - 2019/20 – *Social Prescribing Link workers*
 - 2019/20 – *Clinical Pharmacists*
 - 2020/21 – *First Contact Physiotherapists*
 - 2020/21 – *Physicians Associates*
 - 2021/22 – *First contact community paramedics (TBC)*



- NT place based: Future Care
- Locality journey so far
- **Primary Care Networks in North Tyneside**
- How they fit with our vision of Primary Care Home
- How all this will benefit patients



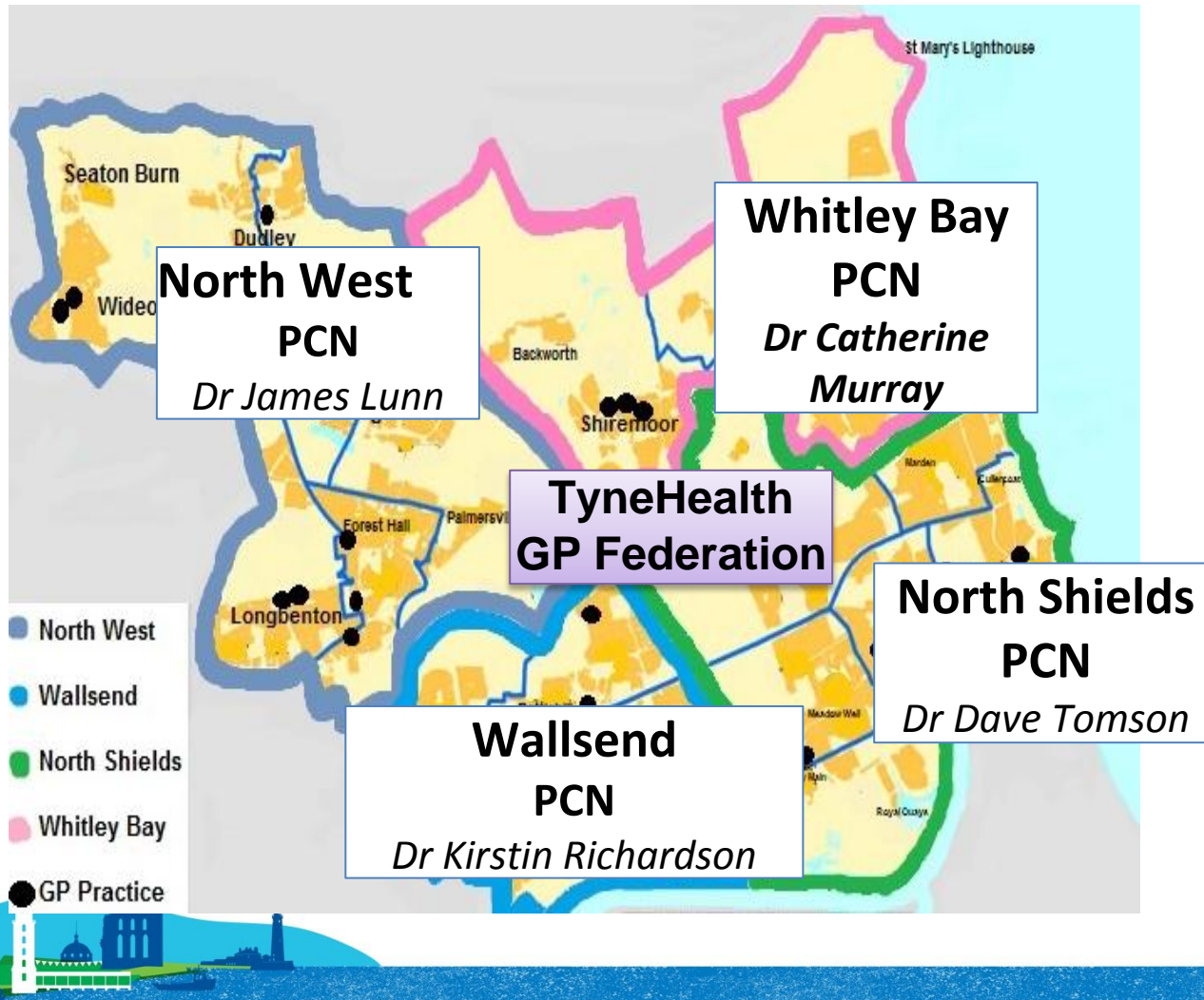
We asked our GPs about PCNs

Essential to know how GPs felt about these to build this bottom up

- Current Locality Footprint?
- PCN Director Role?
- Delivery Mechanism for the Network?



4 Primary Care Networks North Tyneside



Where are we now?

Each of our 4 Primary Care Networks :

- is based on its historic locality footprint (*2 exceptions*)
- meets national requirements for size and format
- has identified a Clinical Director
- has signed the Mandatory Network Agreement
- has submitted the Registration Documents

This means that 100% of NT patients are registered with a practice in a Primary Care Network.

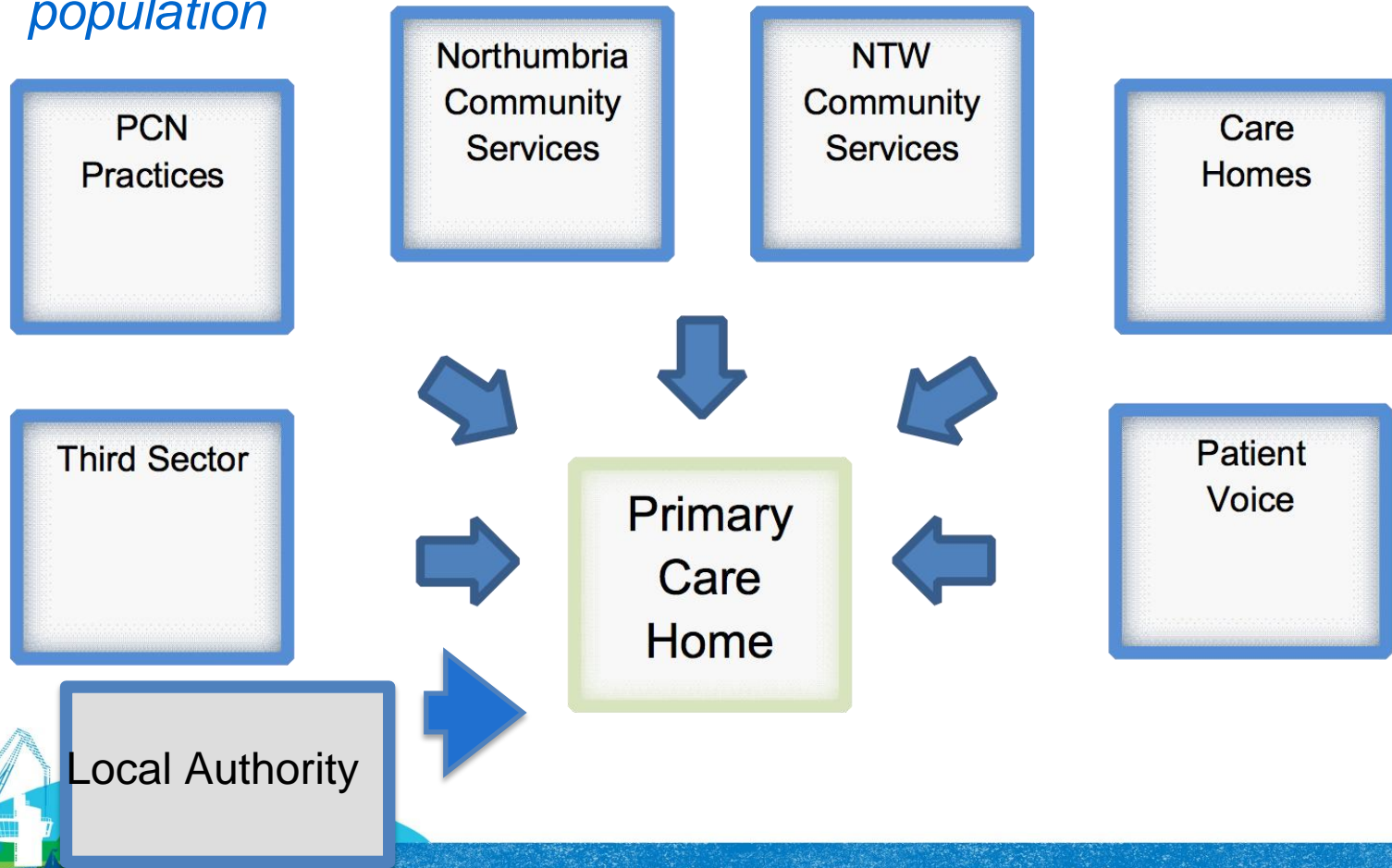


- NT place based: Future Care
- Locality journey so far
- Primary Care Networks in North Tyneside
- **How they fit with our vision of Primary Care Home**
- How all this will benefit patients



Primary Care Home

- Primary Care Home brings PCNs together with other providers to co-produce primary care and community services for their local population*



- NT place based: Future Care
- Locality journey so far
- Primary Care Networks in North Tyneside
- How they fit with our vision of Primary Care Home
- **How all this will benefit patients**



Benefits for Patients?

- More joined up care: *practices, community services, hospital specialists, social care, third sector*
- Easier access to services: closer to home
- More health promotion
- Hospital by exception



Primary Care Networks

Questions/comments/ideas?

