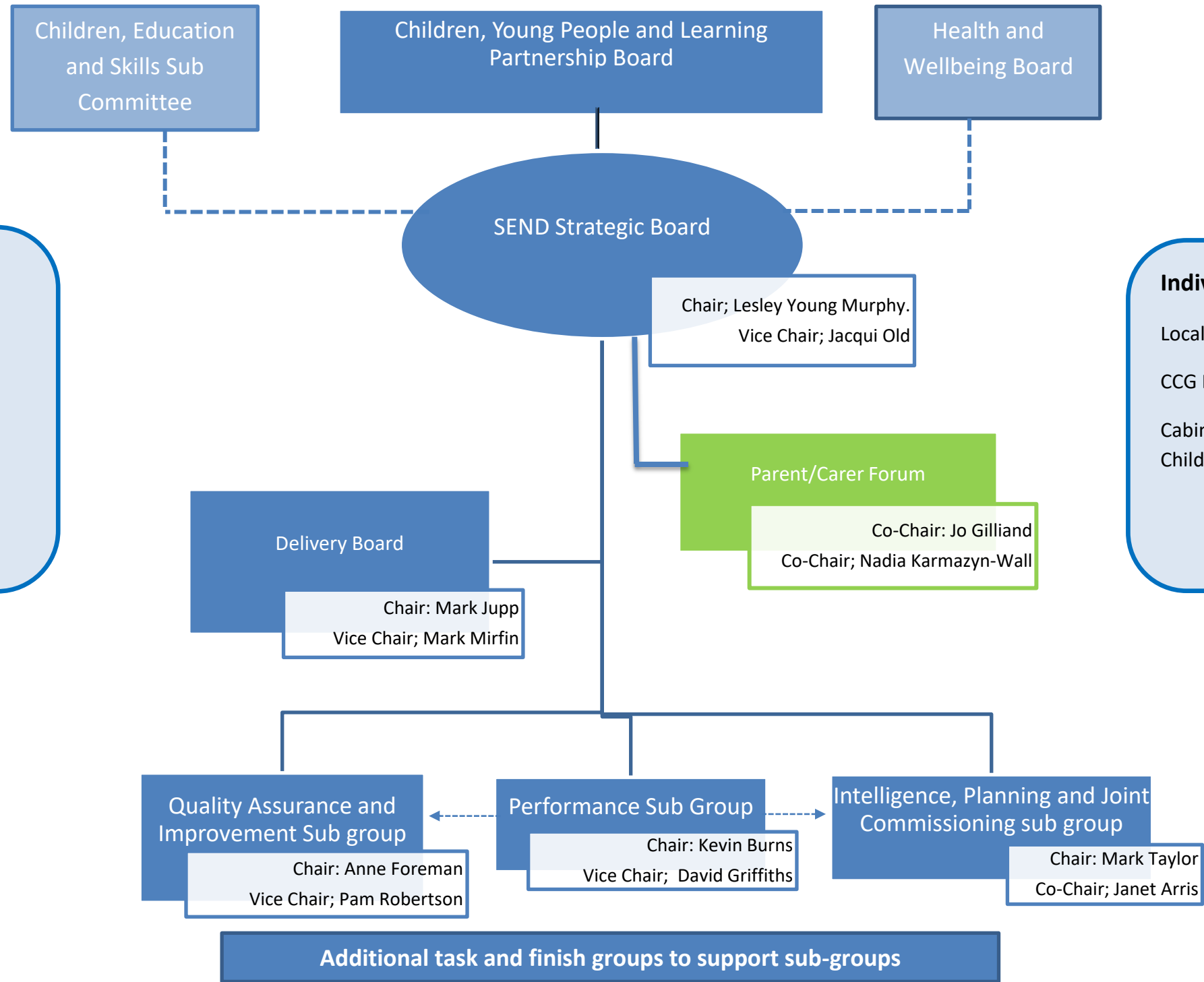


North Tyneside SEND Strategic Partnership Governance Structure and Influential links;



Strategic Partnership Governance across whole life

- Whole Life Disability Board
- Learning Disability Integration Board *focus on LD/Autism and Transforming care agenda*
- Children and Young People Mental Health Board

Individual agency accountability

- Local Authority Cabinet
- CCG Executive Board
- Cabinet member briefings (Adult and Children Social Care)

Engagement

- SEND Youth Forum
- Parent/Carer Forum
- Specialist School Council
- Children and young people engagement framework (see diagram)
- Parent and Carer engagement framework (see diagram)

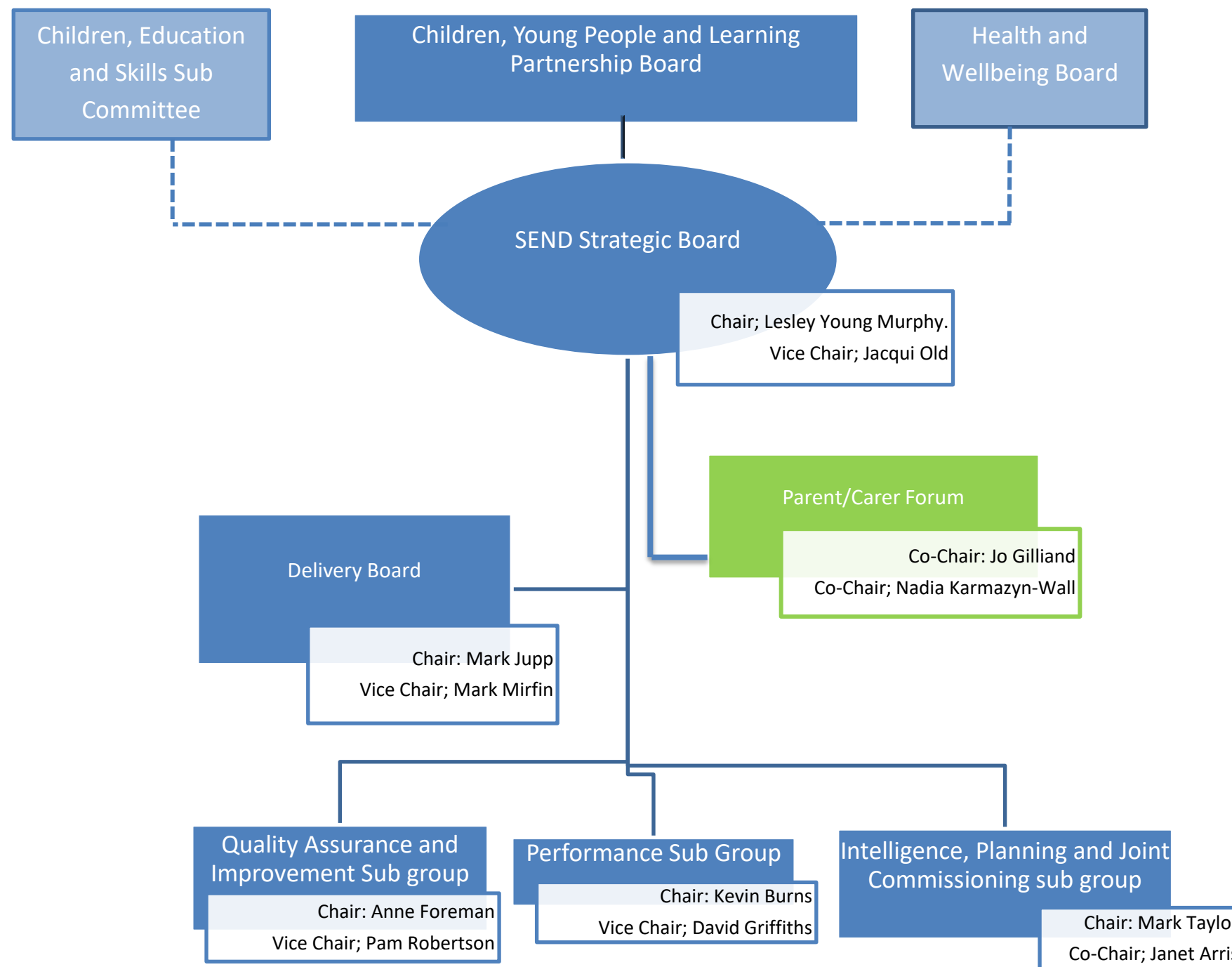
Resource Panels (see diagram)

Complex Case Panel	SEND Panel (0-25)
Care and Education Treatment Reviews	Section 117 Panel – Mental Health
Childrens Services Panels	Local Early Action Plus (LEAPS) Panel
Adult Health and Social Care Resource and Allocation System (RAS) Panel	

Education

- Schools Forum
- Special Heads & Officers Group
- Primary Learning Partnership
- Education Improvement Partnership
- High Needs Block Commissioning

North Tyneside SEND Strategic Partnership Governance Structure;



North Tyneside SEND Strategic Partnership Governance Structure; Board and Sub-group Chair and Vice Chair organisations and Job Titles;

SEND Strategic Board

Chair; Dr Lesley Young-Murphy, Executive Director of Nursing and Chief Operating Officer, North Tyneside CCG

Vice-Chair; Jacqui Old, Director of Children's and Adults' Services, North Tyneside Council

SEND Delivery Board

Chair; Mark Jupp, Senior Manager – Transformation, North Tyneside Council

Vice-Chair; Mark Mirfin, Assistant Director SEND and Whole Life Disability Services, North Tyneside Council

Quality Assurance & Improvement sub group

Chair; Anne Foreman, Designated Clinical Officer, North Tyneside CCG

Vice-Chair; Pam Robertson, SEND Support Service Team Manager, North Tyneside Council

Performance Sub group

Chair; Kevin Burns, Kevin Burns, School Improvement Officer – Inclusion, North Tyneside Council

Vice-Chair; David Griffiths, Interim Assistant Director for Education, Learning & Skills

Intelligence, Planning and Joint LA / CCG Commissioning sub group

Chair; Mark Taylor, Strategic Commissioning Manager, Children and Families, North Tyneside Council

Co-Chair; Janet Arris, Commissioning Manager, North Tyneside CCG